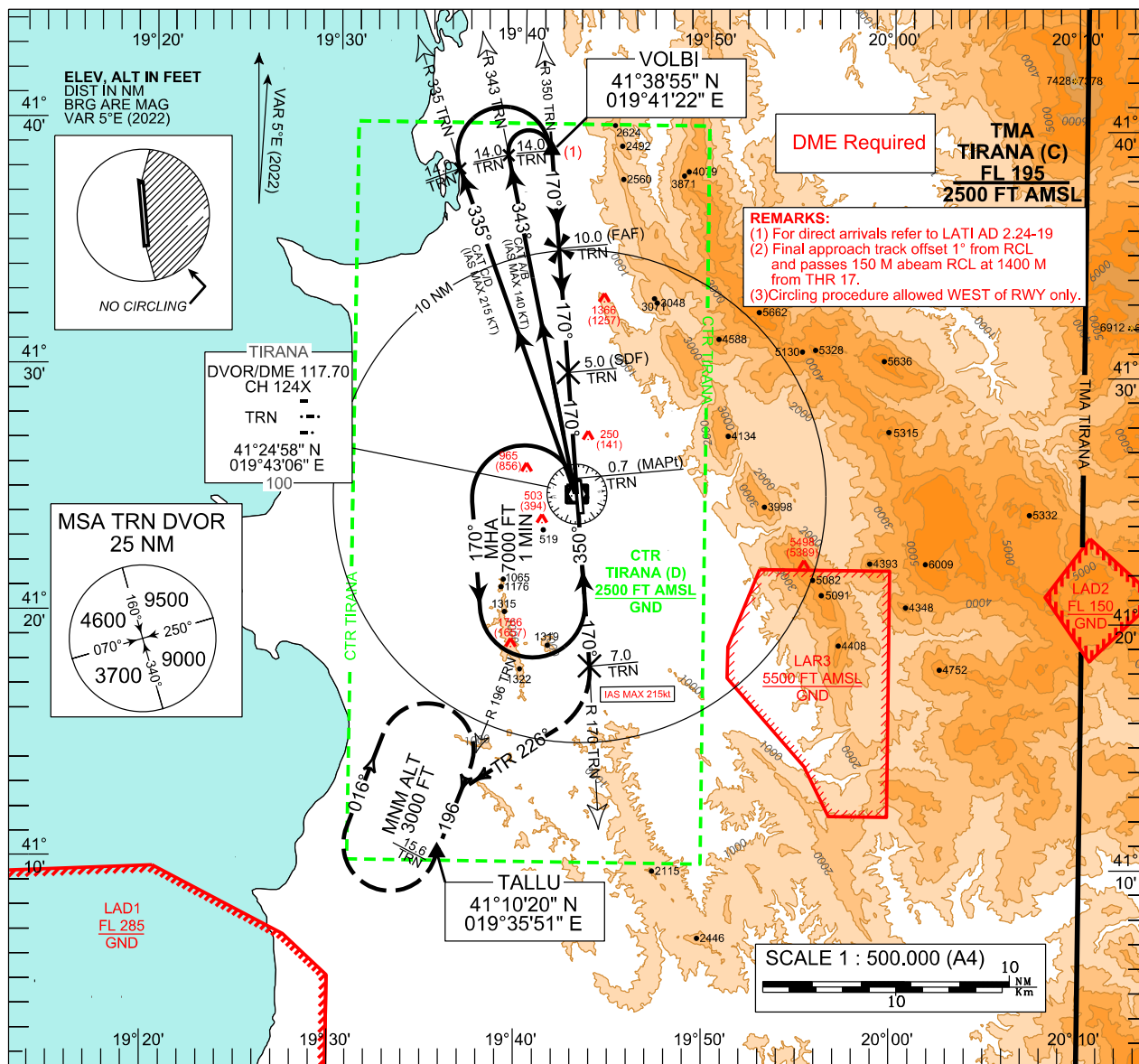


**AERODROME ELEVATION 125 FT**  
**HEIGHTS RELATED TO**  
**THR RWY 17 - ELEV 109 FT**

		ATIS	132.275		
TWR	122.500	APP	133.150	ACC	127.500
	123.500		136.350		136.350

TIRANA (LATI)  
VOR  
RWY 17

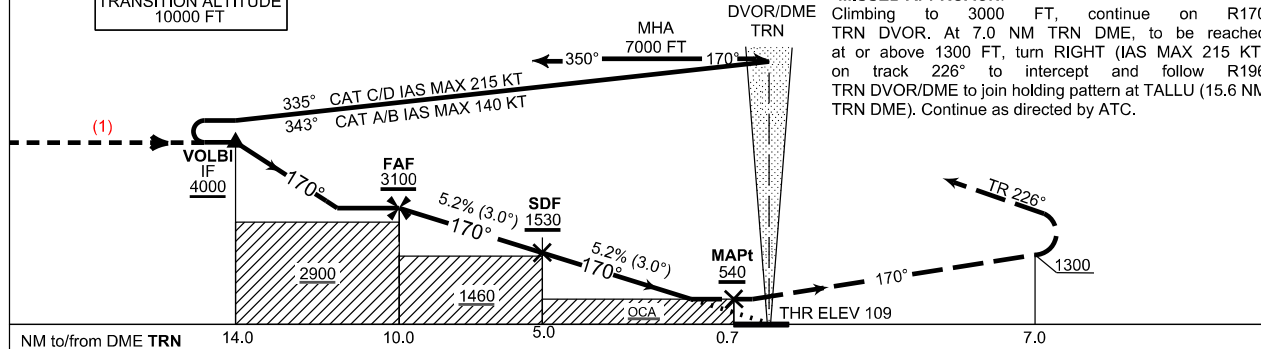
CHANGE : MISSED APPROACH MODIFIED.



TRANSITION ALTITUDE  
10000 FT

**MISSED APPROACH:**

Climbing to 3000 FT, continue on R170 TRN DVOR. At 7.0 NM TRN DME, to be reached at or above 1300 FT, turn RIGHT (IAS MAX 215 KT) on track 226° to intercept and follow R196 TRN DVOR/DME to join holding pattern at TALLU (15.6 NM TRN DME). Continue as directed by ATC.



TRN DME DIST (NM)		NM	10	9.0	8.0	7.0	6.0	5.0	4.7	4.0	3.0	2.0
ALT (HGT)	3.0° APCH	FT	3100 (2991)	2805 (2696)	2485 (2376)	2165 (2056)	1845 (1736)	1530 (1421)	1450 (1341)	1210 (1101)	890 (781)	575 (466)

OCA / H		A	B	C	D	Timing not authorized for defining MAPt						
STRAIGHT IN APPROACH	FT	540 (431)				NOMINAL DESCENT	KT	90	120	140	160	180
CIRCLING (3)	FT	870 (745)	1270 (1145)	1480 (1355)	1750 (1625)	FAF to THR 17 (9.3 NM)	MIN:S	6:12	4:39	3:59	3:29	3:06
						RATE OF DESCENT	FT/MIN	475	640	745	850	955

THIS PAGE INTENTIONALLY LEFT BLANK